

Utility Connections

693 Montecito Blvd.

Introduction

In this document, locations of the utility service connections are shown and instructions are included for turning them off in case of an emergency.

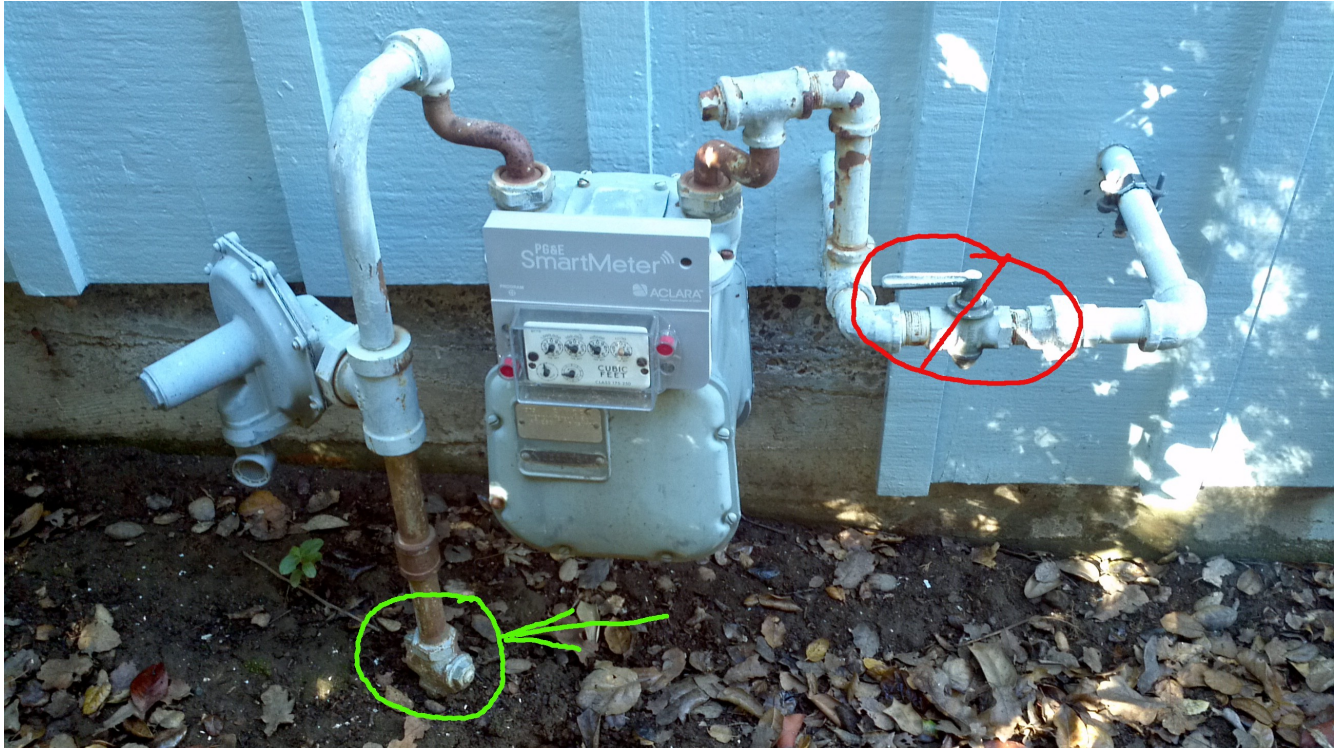
Electrical Panel

The main electrical panel is located at the south corner of the house. The main circuit breaker is shown circled in red. To turn off all the electricity in the house, pull firmly downward on the handle of this main breaker.

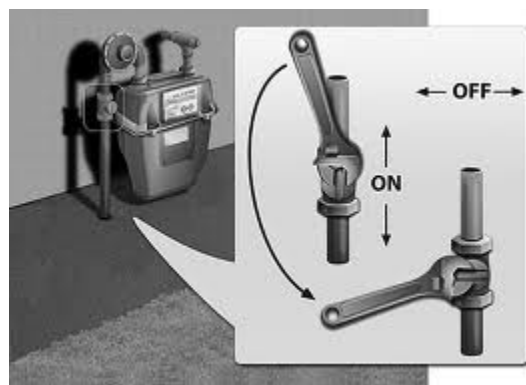


Natural Gas Meter

The Natural Gas shut off is located near the gas meter at the south end of the house. The most obvious valve near the meter is not the shut off valve. The valve circled in red only shuts gas off to the Green House.



The valve near the ground circled in green is the main shut off valve. The operable part of the valve is shown below by the red arrow. A wrench is required to operate the valve.



It is a quarter turn valve and in order to turn the flow off, the tab needs to be turned so that it is cross wise to the flow.

Tools

To shut off the gas, you will need a wrench. In the garage, you will find a tool cabinet on the wall.



Inside the one marked with the green circle is a wrench you can use for this task.



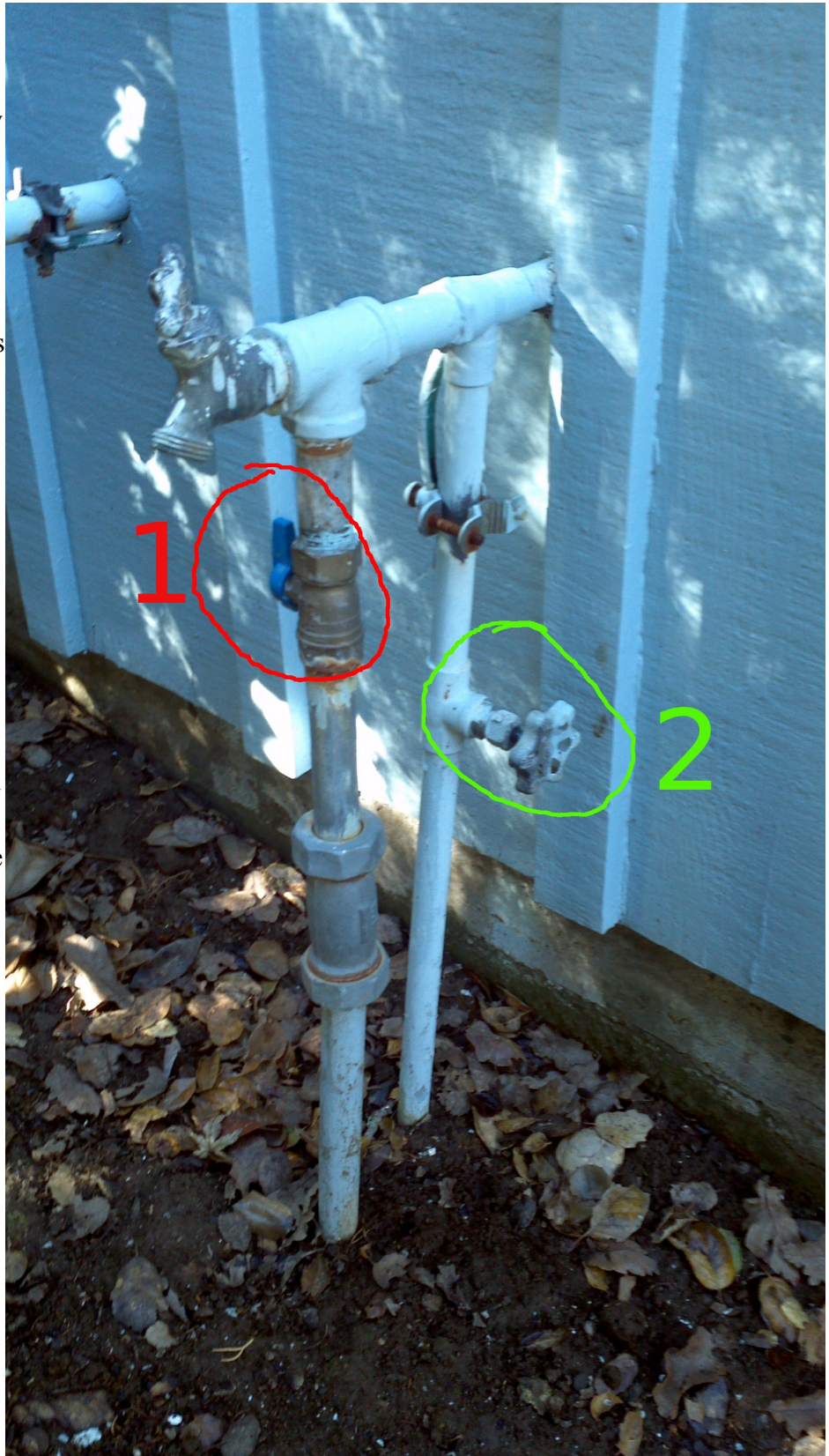
Water Valves

The main shutoff for the water is located at the south end of the house. There are two valves. The main valve is shown in green below (2) and it shuts off the house and the yard. To close this valve, turn it several times around clockwise.

The valve shown in red (1) shuts off most of the yard but not the house. So if you have a bad leak in the yard, close valve 1 first and see if that stops it. This is one of those quarter turn valves and only needs to be turned so that the blue handle is cross ways to the flow.

The part of the yard not shut off by 1 is water near the dog pens, and the rain bird close by the mail box. To shut that water off, you must close valve 2.

There is also a valve near the road at the water meter, but shutting that off is the same as operating valve 2.



More Water Valves of Interest

If one leaves the south corner of the house and walks the inside of the fence line up the hill, you will come to this group of valves on the ground in about 7 or 8 paces.



Number 4 is an electric valve (station 1) that operates two rain birds over the ivy bordered by the road, the drive way and the stone walk/stairs in front of the south end of the house. Number 5 is an electric valve (station 2) that operates 2 rain birds; one of which is just inside of the fence corner located at the south corner of the property; the other is along the fence just a short distance north west of the first.

The interesting valve here is Number 3. It shuts off stations 2 through 8 of the automatic rain birds and sprinklers serving the area above the red brick patio and lawn. The valve was installed one day after a freeze cracked the PVC pipe feeding those valves for stations 2 through 8. It was installed so that if that section ever needed maintenance again, the whole outside water system would not have to be shut off to do it.

If you ever have a bad leak that is in that area above the patio, you can try to shut valve 3 off and see if that solves the problem. To shut this valve, turn it several times around clock wise.

The End

Any questions? Call me any time day or night on my cell

Reed Lawson 530-263-5079.